

B $\flat$  Klarinett 1

# 1. Í Betlehem er barn oss fætt

Þýskt lag  
úts. Össur Geirsson

Andante

3

Musical score for the first piece, 'Í Betlehem er barn oss fætt'. It consists of three staves of music in G major and 4/4 time. The first staff starts with a treble clef, a key signature of one sharp (F#), and a 4/4 time signature. The tempo is marked 'Andante' and the dynamics 'mf'. The first staff contains measures 1-8, with a first ending bracket over measures 7-8 and a measure number '3' above measure 7. The second staff contains measures 9-18. The third staff contains measures 19-24, with a first ending bracket over measures 23-24 and a measure number '9' above measure 19. The piece ends with a double bar line.

# 2. Þá nýfæddur Jesú

W.J.Kirkpatrick  
úts. Össur Geirsson

Andante

3

Musical score for the second piece, 'Þá nýfæddur Jesú'. It consists of three staves of music in B-flat major and 3/4 time. The first staff starts with a treble clef, a key signature of two flats (B $\flat$ , E $\flat$ ), and a 3/4 time signature. The tempo is marked 'Andante' and the dynamics 'mf'. The first staff contains measures 1-10, with a first ending bracket over measures 9-10 and a measure number '3' above measure 9. The second staff contains measures 11-20, with a measure number '11' above measure 11. The third staff contains measures 21-26, with a first ending bracket over measures 25-26 and a measure number '1' above measure 25. The piece ends with a double bar line.

# 3. Bráðum koma blessuð jólin

W.B. Bradbury  
úts. Össur Geirsson

Moderato

4

Musical score for the third piece, 'Bráðum koma blessuð jólin'. It consists of two staves of music in B-flat major and 6/8 time. The first staff starts with a treble clef, a key signature of two flats (B $\flat$ , E $\flat$ ), and a 6/8 time signature. The tempo is marked 'Moderato' and the dynamics 'mf'. The first staff contains measures 1-7, with a first ending bracket over measures 6-7 and a measure number '4' above measure 6. The second staff contains measures 8-14, with a measure number '8' above measure 8. The piece ends with a double bar line.

B $\flat$  Klarinett 1

# 4. Það á að gefa börnum brauð

Íslenskt þjóðlag  
úts. Össur Geirsson

Allegro

2

3

*mf*

11

15

Musical score for 'Það á að gefa börnum brauð' in B-flat major, 4/4 time. The score consists of four staves. The first staff begins with a treble clef, a key signature of one flat, and a 4/4 time signature. It features a repeat sign with a first ending bracket above it, followed by a second ending bracket above it. The tempo is marked 'Allegro' and the dynamics are 'mf'. Measure numbers 2, 3, 11, and 15 are indicated in boxes. The piece concludes with a double bar line and repeat dots.

# 5. Frá ljósanna hásal

Uppruni óljós  
úts. Össur Geirsson, með hlíðsjón af  
raddsetningu David Wilcocks

Tignarlega

5

*f*

*mf*

13

17

1. 2.

*mf*

Musical score for 'Frá ljósanna hásal' in D major, 4/4 time. The score consists of four staves. The first staff begins with a treble clef, a key signature of two sharps, and a 4/4 time signature. It features a treble clef, a key signature of two sharps, and a 4/4 time signature. The tempo is marked 'Tignarlega' and the dynamics are 'f' and 'mf'. Measure numbers 5, 13, and 17 are indicated in boxes. The piece concludes with a double bar line and repeat dots, followed by two first endings labeled '1.' and '2.'.

B $\flat$  Klarinett 1

# 6. Bjart er yfir Betlehem

Danskt lag  
úts. Össur Geirsson

Moderato

Musical score for 'Bjart er yfir Betlehem' in B-flat major, 4/4 time. The score consists of three staves. The first staff starts with a dynamic marking of *mf* and a measure number of 4. The second staff starts with a measure number of 8. The third staff starts with a measure number of 12. The piece concludes with a double bar line.

# 7. Við kveikjum einu kerti á

Emmy Köhler  
úts. Össur Geirsson

Blíðlega

Musical score for 'Við kveikjum einu kerti á' in B-flat major, 4/4 time. The score consists of six staves. The first staff starts with a dynamic marking of *mf* and a measure number of 5. The second staff continues the melody. The third staff includes first and second endings, with a measure number of 14. The fourth staff continues the melody. The fifth staff starts with a dynamic marking of *mf* and a measure number of 22. The sixth staff starts with a measure number of 30. The piece concludes with a double bar line.

B Klarinett 1

# 8. Skín í rauðar skotthúfur

Franskt þjóðlag  
úts. Össur Geirsson

Moderato

5



13



FINE 23

2



31



D.C. al FINE



B $\flat$  Klarinett 1

# 9. Skreytum hús með greinum grænum

Lag frá Wales  
úts. Össur Geirsson

Allegro

3

7

11

15

19

23

27

31

*f*

*mf*

*cresc.*

*f*

# 10. Jólaveinar ganga um gólf

Friðrik Bjarnason  
úts. Össur Geirsson

Dulúðlega



9



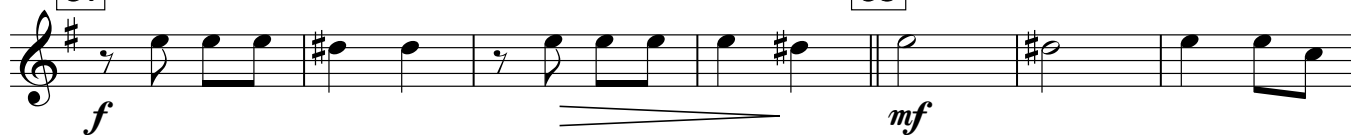
16



24



31



35

43



50

