

B Bassaklarinett

1. Í Betlehem er barn oss fætt

Þýskt lag
úts. Össur Geirsson

Andante

3

mf

9

1. 2.

2. Þá nýfæddur Jesú

W.J.Kirkpatrick
úts. Össur Geirsson

Andante

3

mf

11

1. 2.

3. Bráðum koma blessuð jólin

W.B. Bradbury
úts. Össur Geirsson

Moderato

4

mf

8

B Bassaklarinett

4. Það á að gefa börnum brauð

Íslenskt þjóðlag
úts. Össur Geirsson

Allegro

3

Musical score for 'Það á að gefa börnum brauð' in B-flat major, 4/4 time. The score consists of four staves. The first staff begins with a treble clef, a key signature of two flats, and a 4/4 time signature. It starts with a forte (*f*) dynamic and a triplet of eighth notes. A first ending bracket labeled '3' spans the first six measures. The second staff continues the melody. The third staff begins with a mezzo-forte (*mf*) dynamic and contains a measure marked '11'. The fourth staff concludes the piece with a double bar line and repeat dots, containing a measure marked '15'.

5. Frá ljósanna hásal

Uppruni óljós
úts. Össur Geirsson, með hljóðsjón af
raddsetningu David Wilcocks

Tignarlega

5

Musical score for 'Frá ljósanna hásal' in D major, 4/4 time. The score consists of four staves. The first staff begins with a treble clef, a key signature of two sharps, and a 4/4 time signature. It starts with a forte (*f*) dynamic and a triplet of eighth notes. A first ending bracket labeled '5' spans the first six measures. The second staff continues the melody. The third staff contains a measure marked '13' and ends with a triplet of eighth notes. The fourth staff contains a measure marked '17' and ends with a triplet of eighth notes. The final staff shows two first endings: '1.' and '2.', both ending with a double bar line and repeat dots. The piece concludes with a mezzo-forte (*mf*) dynamic.

© 2003 SÍSL

Heimilt er að ljósrita þessa útsetningu til eigin nota, en ekki til að lána eða selja öðrum

B Bassaklarinett

6. Bjart er yfir Betlehem

Danskt lag
úts. Össur Geirsson

Moderato

Musical score for 'Bjart er yfir Betlehem' in B-flat major, 4/4 time. The score consists of three staves. The first staff begins with a treble clef, a key signature of one flat, and a 4/4 time signature. It starts with a *mf* dynamic and includes a first ending bracket labeled '4'. The second staff continues the melody and includes a second ending bracket labeled '8'. The third staff concludes the piece with a final cadence.

7. Við kveikjum einu kerti á

Emmy Köhler
úts. Össur Geirsson

Blíðlega

Musical score for 'Við kveikjum einu kerti á' in B-flat major, 4/4 time. The score consists of six staves. The first staff begins with a treble clef, a key signature of one flat, and a 4/4 time signature. It starts with a *mf* dynamic and includes a first ending bracket labeled '5'. The second staff continues the melody. The third staff includes a first ending bracket labeled '14' and a *p* dynamic marking. The fourth staff continues the melody. The fifth staff includes a first ending bracket labeled '22' and a *mf* dynamic marking. The sixth staff concludes the piece with a first ending bracket labeled '30' and a final cadence.

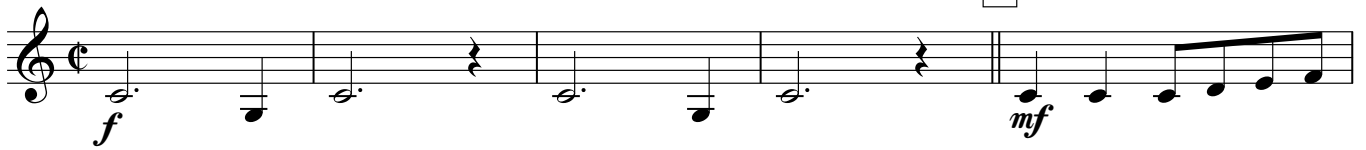
B Bassaklarinett

8. Skín í rauðar skotthúfur

Franskt þjóðlag
úts. Össur Geirsson

Moderato

5



13

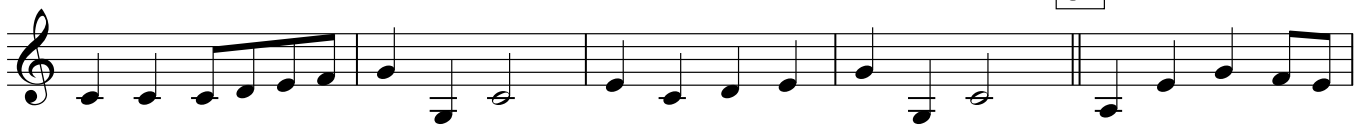


FINE 23

4



31



D.C. al FINE



B Bassaklarinett

9. Skreytum hús með greinum grænum

Lag frá Wales
úts. Össur Geirsson

Allegro

3

f *mf*

7

11

15

cresc.

19

f

23

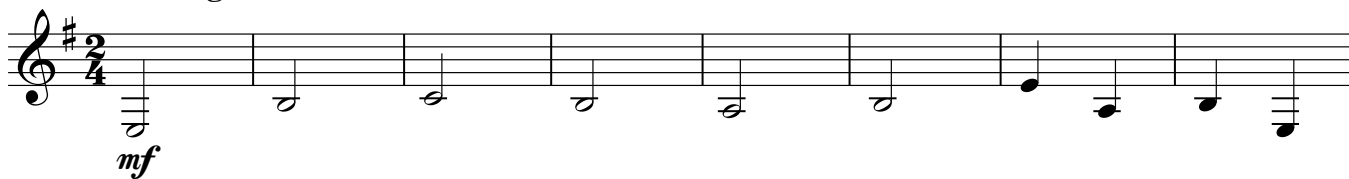
27

31

10. Jólasveinar ganga um gólf

Friðrik Bjarnason
úts. Össur Geirsson

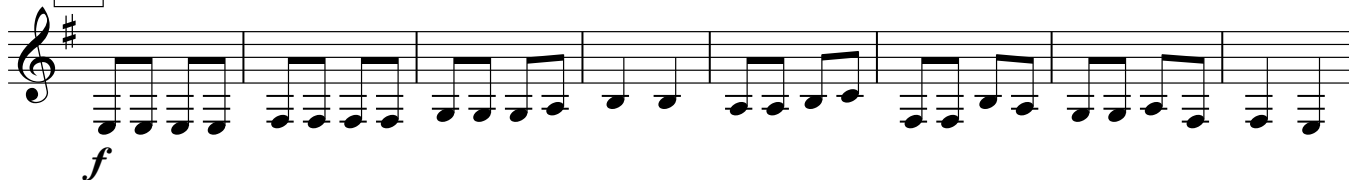
Dulúðlega



9



16



24



31

35



43



50

