

**E $\flat$  Horn**

# 1. Í Betlehem er barn oss fætt

Dýskt lag  
úts. Össur Geirsson

Andante

3

*mf*

9

1. 2.

# 2. Þá nýfæddur Jesú

W.J.Kirkpatrick  
úts. Össur Geirsson

Andante

3

*mf*

11

1. 2.

# 3. Bráðum koma blessuð jólin

W.B. Bradbury  
úts. Össur Geirsson

Moderato

4

*mf*

8

E♭ Horn

# 4. Það á að gefa börnum brauð

Íslenskt þjóðlag  
úts. Össur Geirsson

Allegro

3

Musical score for 'Það á að gefa börnum brauð' in 4/4 time. The score consists of four staves. The first staff starts with a dynamic marking of *f* and includes a first ending bracket labeled '3'. The second staff continues the melody. The third staff starts with a measure number '11' and continues the melody. The fourth staff starts with a measure number '15' and ends with a double bar line and repeat dots.

# 5. Frá ljósanna hásal

Uppruni óljós  
úts. Össur Geirsson, með hljóðsjón af  
raddsetningu David Wilcocks

Tignarlega

5

Musical score for 'Frá ljósanna hásal' in 4/4 time with a key signature of two sharps (F# and C#). The score consists of five staves. The first staff starts with a dynamic marking of *f* and includes a first ending bracket labeled '5'. The second staff continues the melody. The third staff starts with a measure number '13' and continues the melody. The fourth staff starts with a measure number '17' and ends with a dynamic marking of *f*. The fifth staff includes two first ending brackets labeled '1.' and '2.', with a dynamic marking of *mf* at the end.

© 2003 SÍSL

Heimilt er að ljósrita þessa útsetningu til eigin nota, en ekki til að lána eða selja öðrum

E♭ Horn

## 6. Bjart er yfir Betlehem

Danskt lag  
úts. Össur Geirsson

Moderato

mf

4

8

12

2/3

2/3

2/3

Detailed description: This is the musical score for the first piece, 'Bjart er yfir Betlehem'. It is written for E♭ Horn in 4/4 time. The tempo is 'Moderato'. The score consists of three staves of music. The first staff starts with a treble clef, a 4/4 time signature, and a mezzo-forte (mf) dynamic. It features a melodic line with a triplet of eighth notes (marked 2/3) and a repeat sign with a first ending bracket. The second staff continues the melody with another triplet (2/3) and a repeat sign. The third staff concludes the piece with a final triplet (2/3) and a repeat sign. Measure numbers 4, 8, and 12 are indicated in boxes above the staves.

## 7. Við kveikjum einu kerti á

Emmy Köhler  
úts. Össur Geirsson

Blíðlega

mf

5

14

22

30

Detailed description: This is the musical score for the second piece, 'Við kveikjum einu kerti á'. It is written for E♭ Horn in 4/4 time. The tempo is 'Blíðlega' (Andante). The score consists of six staves of music. The first staff starts with a treble clef, a 4/4 time signature, and a mezzo-forte (mf) dynamic. It features a melodic line with a repeat sign and a first ending bracket. The second staff continues the melody. The third staff includes a first ending (1.) and a second ending (2.) with a repeat sign. The fourth staff continues the melody. The fifth staff has a repeat sign and a first ending bracket. The sixth staff concludes the piece. Measure numbers 5, 14, 22, and 30 are indicated in boxes above the staves.

E♭ Horn

# 8. Skín í rauðar skotthúfur

Franskt þjóðlag  
úts. Óssur Geirsson

Moderato

5

13

FINE 23

6

31

D.C. al FINE

E♭ Horn

# 9. Skreytum hús með greinum grænum

Lag frá Wales  
úts. Össur Geirsson

**Allegro**

**3**

*f* *mf*

**7**

**11**

**15**

*cresc.*

**19**

*f*

**23**

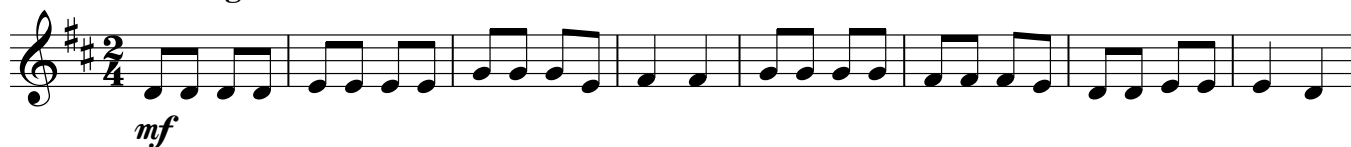
**27**

**31**

# 10. Jólasveinar ganga um gólf

Friðrik Bjarnason  
úts. Össur Geirsson

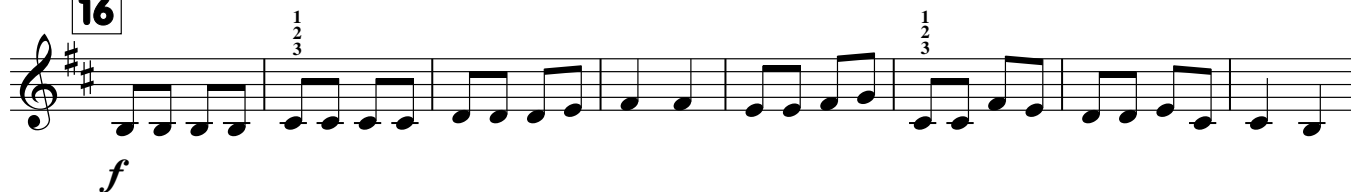
Dulúðlega



9



16



24



31

35



43



50

