

Túba

1. Í Betlehem er barn oss fætt

Þýskt lag
úts. Össur Geirsson

Andante

3

Musical score for 'Í Betlehem er barn oss fætt'. The score is written in bass clef with a key signature of two flats (B-flat and E-flat) and a 4/4 time signature. It begins with a dynamic marking of *mf*. The first line contains measures 1 through 6, with a repeat sign at the end of measure 6. The second line contains measures 7 through 8. The third line contains measures 9 through 12, with first and second endings marked '1.' and '2.' respectively. The piece concludes with a double bar line.

2. Þá nýfæddur Jesú

W.J.Kirkpatrick
úts. Össur Geirsson

Andante

3

Musical score for 'Þá nýfæddur Jesú'. The score is written in bass clef with a key signature of three flats (B-flat, E-flat, and A-flat) and a 3/4 time signature. It begins with a dynamic marking of *mf*. The first line contains measures 1 through 10, with a repeat sign at the end of measure 10. The second line contains measures 11 through 14. The third line contains measures 15 through 18, with first and second endings marked '1.' and '2.' respectively. The piece concludes with a double bar line.

3. Bráðum koma blessuð jólin

W.B. Bradbury
úts. Össur Geirsson

Moderato

4

Musical score for 'Bráðum koma blessuð jólin'. The score is written in bass clef with a key signature of three flats (B-flat, E-flat, and A-flat) and a 6/8 time signature. It begins with a dynamic marking of *mf*. The first line contains measures 1 through 7, with a repeat sign at the end of measure 7. The second line contains measures 8 through 11. The piece concludes with a double bar line.

© 2003 SÍSL

Heimilt er að ljósrita þessa útsetningu til eigin nota, en ekki til að lána eða selja öðrum

Túba

4. Það á að gefa börnum brauð

Íslenskt þjóðlag
úts. Össur Geirsson

Allegro

3



11



15



5. Frá ljósanna hásal

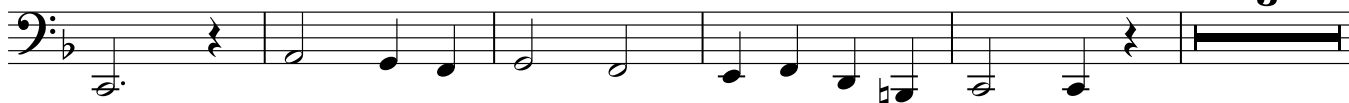
Uppruni óljós
úts. Össur Geirsson, með hliðsjón af
raddsetningu David Wilcocks

Tignarlega

5



13



17

3



© 2003 SÍSL

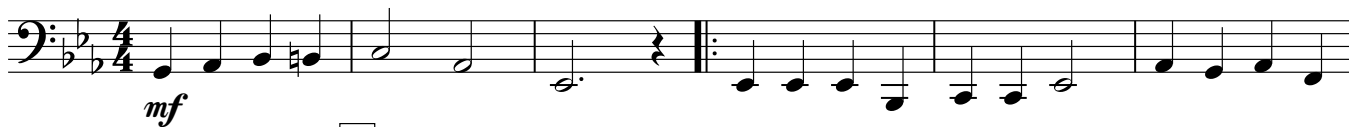
Heimilt er að ljósrita þessa útsetningu til eigin nota, en ekki til að lána eða selja öðrum

6. Bjart er yfir Betlehem

Dansk lag
úts. Össur Geirsson

Moderato

4



8



12

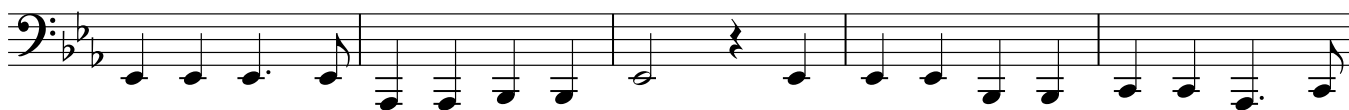
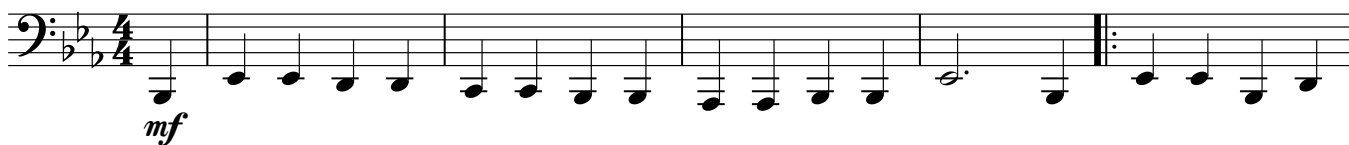


7. Við kveikjum einu kert á

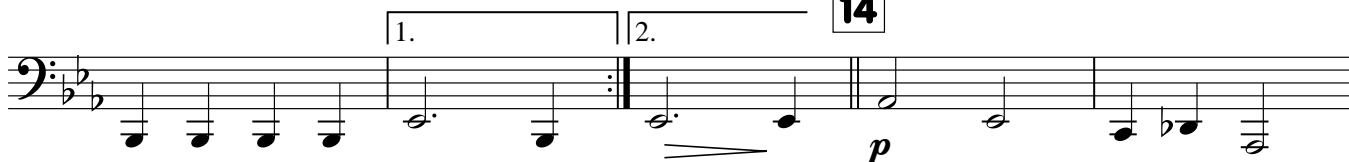
Emmy Köhler
úts. Össur Geirsson

Blíðlega

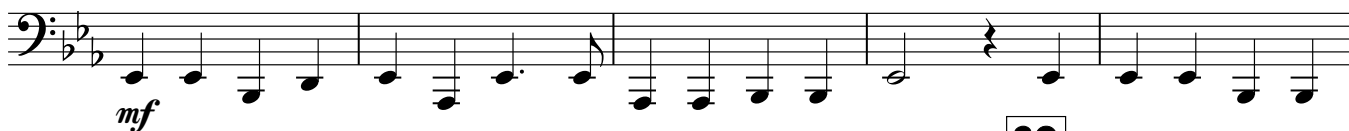
5



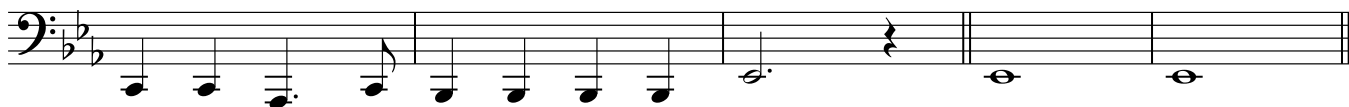
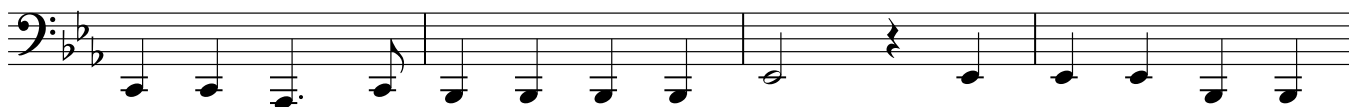
14



22



30



Túba

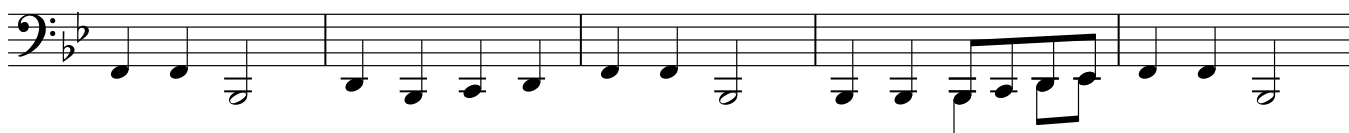
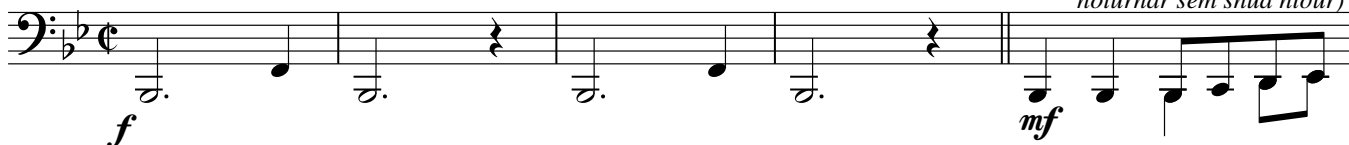
8. Skín í rauðar skotthúfur

Franskt þjóðlag
úts. Össur Geirsson

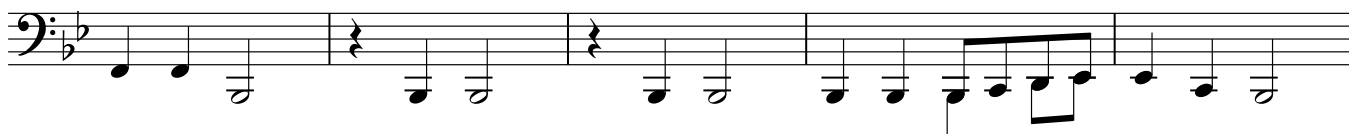
Moderato

5

(Þeir sem vilja geta spilað
nóturnar sem snúa niður)



13



FINE 23

4



31



D.C. al FINE



© 2003 SÍSL

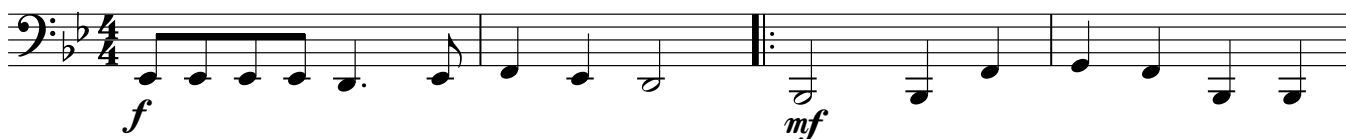
Heimilt er að ljósrita þessa útsetningu til eigin nota, en ekki til að lána eða selja öðrum

9. Skreytum hús með greinum grænum

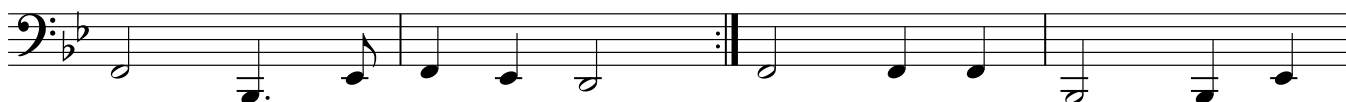
Lag frá Wales
úts. Össur Geirsson

Allegro

3



7



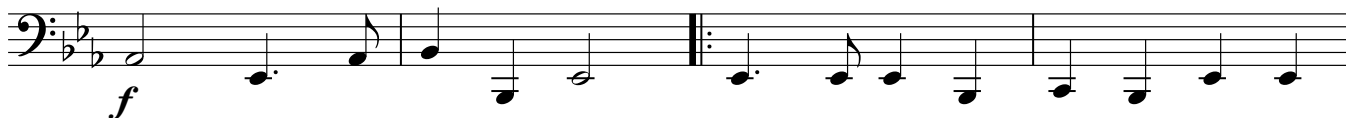
11



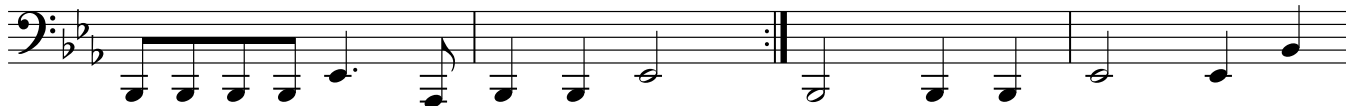
15



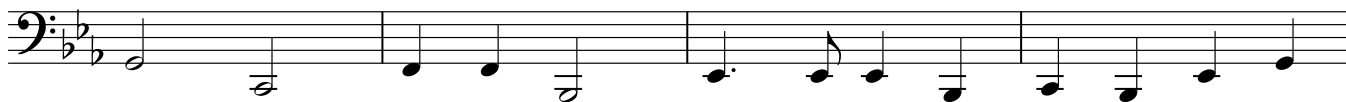
19



23



27



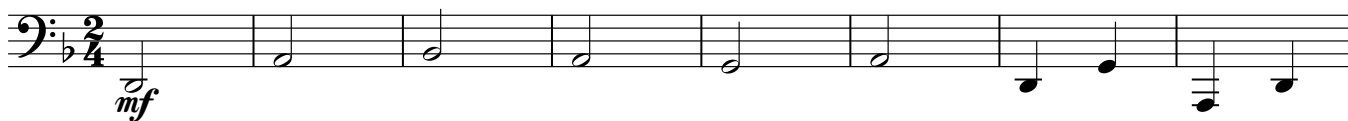
31



10. Jólasveinar ganga um gólf

Friðrik Bjarnason
úts. Össur Geirsson

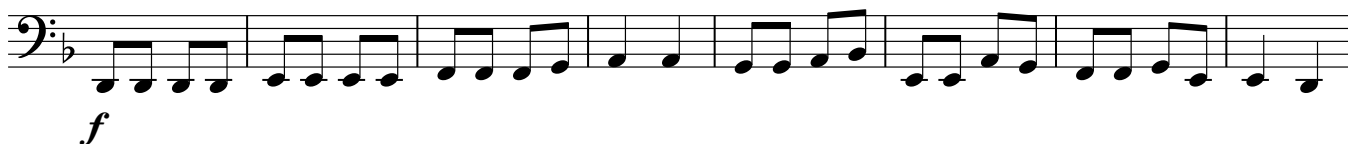
Dulúðlega



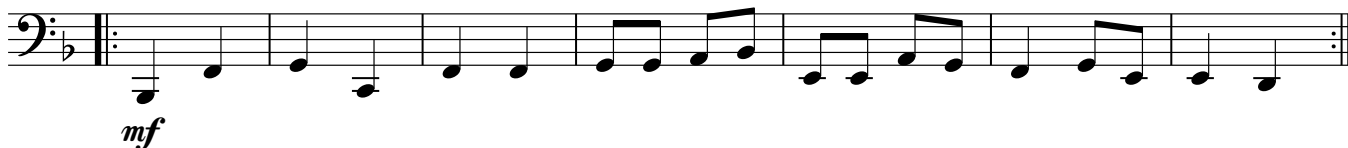
9



16

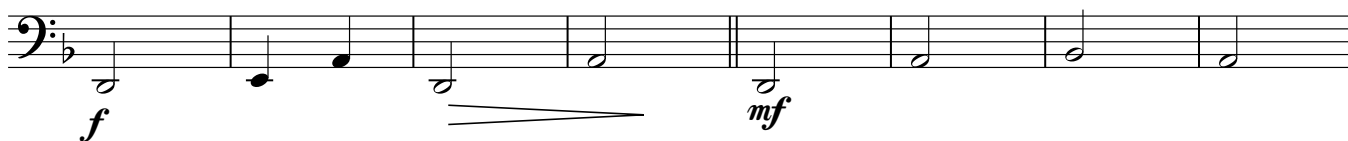


24



31

35



43



50

