

B Klarinett 3

1. Í Betlehem er barn oss fætt

Þýskt lag
úts. Össur Geirsson

Andante

3

mf

9

1. 2.

2. Þá nýfæddur Jesú

W.J.Kirkpatrick
úts. Össur Geirsson

Andante

3

mf

11

1. 2.

3. Bráðum koma blessuð jólin

W.B. Bradbury
úts. Össur Geirsson

Moderato

4

mf

8

B Klarinett 3

4. Það á að gefa börnum brauð

Íslenskt þjóðlag
úts. Össur Geirsson

Allegro

3

Musical score for 'Það á að gefa börnum brauð' in B-flat major, 4/4 time. The score consists of four staves. The first staff begins with a treble clef, a key signature of one flat, and a 4/4 time signature. It starts with a dynamic marking of *f* and includes a first ending bracket labeled '3'. The second staff continues the melody. The third staff has a first ending bracket labeled '11'. The fourth staff concludes the piece with a double bar line and repeat dots.

5. Frá ljósanna hásal

Uppruni óljós
úts. Össur Geirsson, með hlíðsjón af
raddsetningu David Wilcocks

Tignarlega

5

Musical score for 'Frá ljósanna hásal' in D major, 4/4 time. The score consists of five staves. The first staff begins with a treble clef, a key signature of two sharps, and a 4/4 time signature. It starts with a dynamic marking of *f* and includes a first ending bracket labeled '5'. The second staff continues the melody. The third staff has first ending brackets labeled '13' and '17'. The fourth staff features a crescendo hairpin and a dynamic marking of *f*. The fifth staff concludes with two first ending brackets labeled '1.' and '2.', ending with a double bar line and repeat dots. A dynamic marking of *mf* is placed below the final measure.

© 2003 SÍSL

Heimilt er að ljósrita þessa útsetningu til eigin nota, en ekki til að lána eða selja öðrum

B \flat Klarinett 3

6. Bjart er yfir Betlehem

Danskt lag
úts. Össur Geirsson

Moderato

Musical score for 'Bjart er yfir Betlehem' in B-flat major, 4/4 time. The score consists of three staves. The first staff starts with a treble clef, a key signature of one flat, and a 4/4 time signature. It begins with a mezzo-forte (mf) dynamic. Measure numbers 4, 8, and 12 are indicated in boxes above the staves. The piece concludes with a double bar line.

7. Við kveikjum einu kerti á

Emmy Köhler
úts. Össur Geirsson

Blíðlega

Musical score for 'Við kveikjum einu kerti á' in B-flat major, 4/4 time. The score consists of seven staves. The first staff starts with a treble clef, a key signature of one flat, and a 4/4 time signature. It begins with a mezzo-forte (mf) dynamic. Measure numbers 5, 14, 22, and 30 are indicated in boxes above the staves. The piece includes first and second endings at measure 14. The score concludes with a double bar line.

B Klarinett 3

8. Skín í rauðar skotthúfur

Franskt þjóðlag
úts. Össur Geirsson

Moderato

5

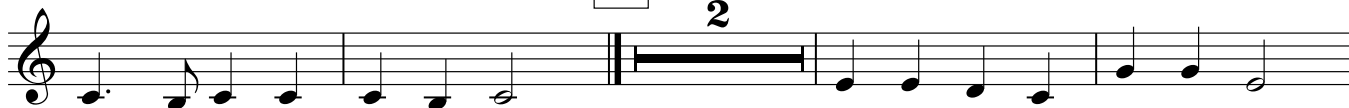


13



FINE 23

2



31



D.C. al FINE



B \flat Klarinett 3

9. Skreytum hús með greinum grænum

Lag frá Wales
úts. Össur Geirsson

Allegro

3

f *mf*

7

11

15

cresc.

19

f

23

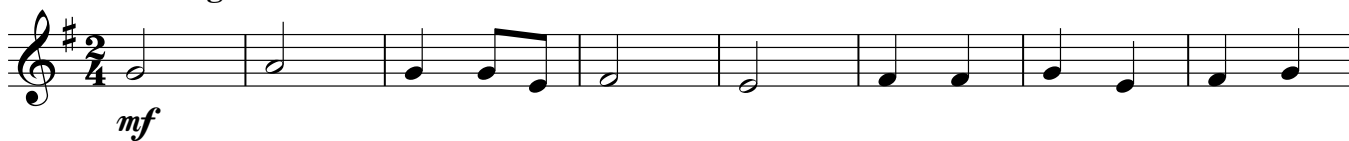
27

31

10. Jólasveinar ganga um gólf

Friðrik Bjarnason
úts. Össur Geirsson

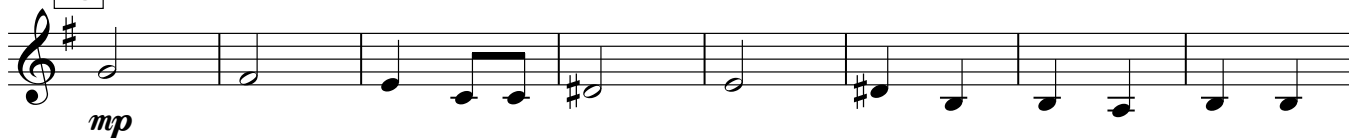
Dulúðlega



9



16



24



31



35



43



50

