





B $\flat$  Tenor saxófónn

## 6. Bjart er yfir Betlehem

Danskt lag  
úts. Össur Geirsson

Moderato

4

Musical score for '6. Bjart er yfir Betlehem' in B $\flat$  major, 4/4 time. The score consists of three staves. The first staff starts with a treble clef, a key signature of one flat, and a 4/4 time signature. The tempo is 'Moderato' and the dynamics are 'mf'. The first staff contains measures 1-4, with a repeat sign at the end. The second staff contains measures 5-8, with a repeat sign at the beginning. The third staff contains measures 9-12, ending with a double bar line.

## 7. Við kveikjum einu kerti á

Emmy Köhler  
úts. Össur Geirsson

Blíðlega

5

Musical score for '7. Við kveikjum einu kerti á' in B $\flat$  major, 4/4 time. The score consists of six staves. The first staff starts with a treble clef, a key signature of one flat, and a 4/4 time signature. The tempo is 'Blíðlega' and the dynamics are 'mf'. The first staff contains measures 1-5, with a repeat sign at the end. The second staff contains measures 6-13, with a repeat sign at the beginning. The third staff contains measures 14-21, with a first ending bracket over measures 14-15 and a second ending bracket over measures 16-17. The fourth staff contains measures 22-29, with a repeat sign at the beginning. The fifth staff contains measures 30-31, with a repeat sign at the beginning. The sixth staff contains measures 32-33, ending with a double bar line.

B $\flat$  Tenor saxófónn

# 8. Skín í rauðar skotthúfur

Franskt þjóðlag  
úts. Össur Geirsson

Moderato

5

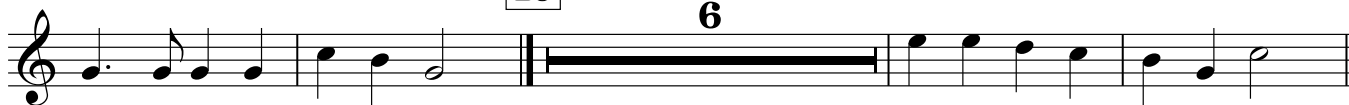


13



FINE 23

6



31



D.C. al FINE





