

E♭ Baritón Saxófónn

1. Í Betlehem er barn oss fætt

Þýskt lag
úts. Össur Geirsson

Andante

Musical score for 'Í Betlehem er barn oss fætt' in E major, 4/4 time. The score consists of three staves. The first staff starts with a treble clef, a key signature of one sharp (F#), and a 4/4 time signature. It begins with a mezzo-forte (mf) dynamic. A box containing the number '3' is placed above the first measure. The second staff continues the melody. The third staff features a first ending (1.) and a second ending (2.) marked with a double bar line and repeat dots.

2. Þá nýfæddur Jesús

W.J.Kirkpatrick
úts. Össur Geirsson

Andante

Musical score for 'Þá nýfæddur Jesús' in E major, 3/4 time. The score consists of three staves. The first staff starts with a treble clef, a key signature of one sharp (F#), and a 3/4 time signature. It begins with a mezzo-forte (mf) dynamic. A box containing the number '3' is placed above the first measure. The second staff continues the melody. The third staff features a first ending (1.) and a second ending (2.) marked with a double bar line and repeat dots.

3. Bráðum koma blessuð jólin

W.B. Bradbury
úts. Össur Geirsson

Moderato

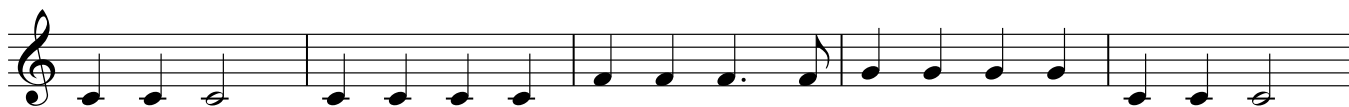
Musical score for 'Bráðum koma blessuð jólin' in E major, 6/8 time. The score consists of two staves. The first staff starts with a treble clef, a key signature of one sharp (F#), and a 6/8 time signature. It begins with a mezzo-forte (mf) dynamic. A box containing the number '4' is placed above the first measure. The second staff continues the melody. A box containing the number '8' is placed above the first measure of the second staff.

4. Það á að gefa börnum brauð

Íslenskt þjóðlag
úts. Össur Geirsson

Allegro

3



11



15



5. Frá ljósanna hásal

Uppruni óljós
úts. Össur Geirsson, með hliðsjón af
raddsetningu David Wilcocks

Tignarlega

5



13



17

3



6. Bjart er yfir Betlehem

Danskt lag
úts. Össur Geirsson

Moderato

Musical score for 'Bjart er yfir Betlehem' in 4/4 time, Moderato tempo. The score consists of three staves. The first staff starts with a treble clef, a 4/4 time signature, and a mezzo-forte (*mf*) dynamic. It contains measures 1 through 4, with a boxed measure number '4' above the fourth measure. The second staff contains measures 5 through 8, with a boxed measure number '8' above the eighth measure. The third staff contains measures 9 through 12, with a boxed measure number '12' above the twelfth measure. The piece concludes with a double bar line.

7. Við kveikjum einu kerti á

Emmy Köhler
úts. Össur Geirsson

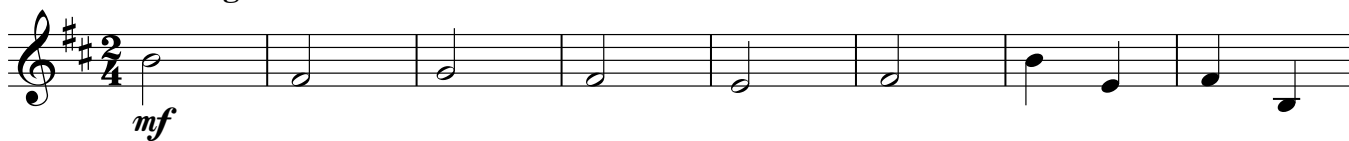
Blíðlega

Musical score for 'Við kveikjum einu kerti á' in 4/4 time, Blíðlega tempo. The score consists of six staves. The first staff starts with a treble clef, a 4/4 time signature, and a mezzo-forte (*mf*) dynamic. It contains measures 1 through 5, with a boxed measure number '5' above the fifth measure. The second staff contains measures 6 through 13. The third staff contains measures 14 through 21, with a boxed measure number '14' above the fourteenth measure. The fourth staff contains measures 22 through 29, with a boxed measure number '22' above the twenty-second measure. The fifth staff contains measures 30 through 33, with a boxed measure number '30' above the thirtieth measure. The sixth staff contains measures 34 through 36, ending with a double bar line. A piano (*p*) dynamic is indicated below the fourteenth measure.

10. Jólasveinar ganga um gólf

Friðrik Bjarnason
úts. Össur Geirsson

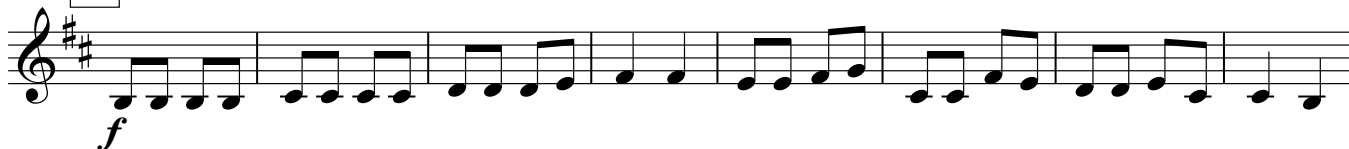
Dulúðlega



9



16



24



31

35



43



50

