

Básúna
Barítón

1. Í Betlehem er barn oss fætt

Þýskt lag
úts. Össur Geirsson

Andante

3



9



2. Þá nýfæddur Jesú

W.J.Kirkpatrick
úts. Össur Geirsson

Andante

3



11

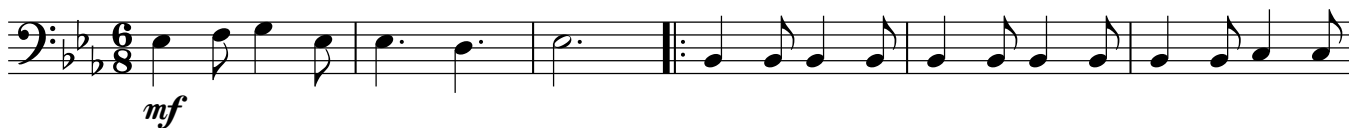


3. Bráðum koma blessuð jólin

W.B. Bradbury
úts. Össur Geirsson

Moderato

4



8



Básúna
Barítón

4. Það á að gefa börnum brauð

Íslenskt þjóðlag
úts. Össur Geirsson

Allegro

3

f *mf*

11

15

Musical score for 'Það á að gefa börnum brauð' in bass clef, 4/4 time, key of B-flat major. The score consists of four staves. The first staff starts with a forte (*f*) dynamic and a tempo marking of Allegro. A measure rest of 3 measures is indicated by a box with the number 3. The second staff begins with a mezzo-forte (*mf*) dynamic. Measure rests of 11 and 15 measures are indicated by boxes with the numbers 11 and 15 respectively. The piece concludes with a double bar line and repeat dots.

5. Frá ljósanna hásal

Uppruni óljós
úts. Össur Geirsson, með hliðsjón af
raddsetningu David Wilcocks

Tignarlega

5

f *mf*

13 **17** **3**

1. 2.

Musical score for 'Frá ljósanna hásal' in bass clef, 4/4 time, key of B-flat major. The score consists of four staves. The first staff starts with a forte (*f*) dynamic and a tempo marking of Tignarlega. A measure rest of 5 measures is indicated by a box with the number 5. The second staff begins with a mezzo-forte (*mf*) dynamic. Measure rests of 13, 17, and 3 measures are indicated by boxes with the numbers 13, 17, and 3 respectively. The piece concludes with a double bar line and repeat dots. The final staff shows two endings: the first ending (1.) leads back to the beginning of the piece, and the second ending (2.) concludes the piece.

Básúna
Barítón

6. Bjart er yfir Betlehem

Danskt lag
úts. Össur Geirsson

Moderato

4



8



12



7. Við kveikjum einu kertu á

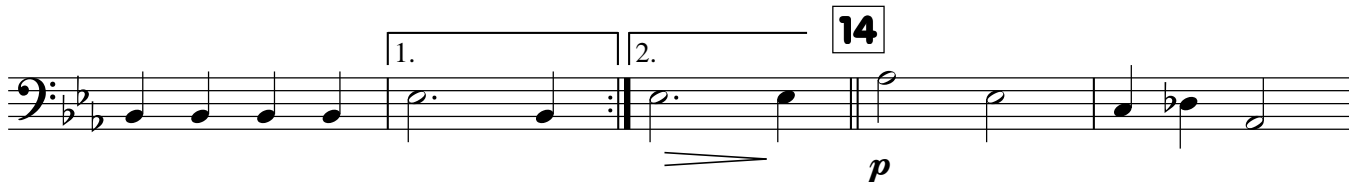
Emmy Köhler
úts. Össur Geirsson

Blíðlega

5



14



22



30



Básúna
Barítón

8. Skín í rauðar skotthúfur

Franskt þjóðlag
úts. Össur Geirsson

Moderato

5

f *mf* (Þeir sem vilja geta spilað
nóturnar sem snúa niður)

13

FINE 23

4

31

D.C. al FINE

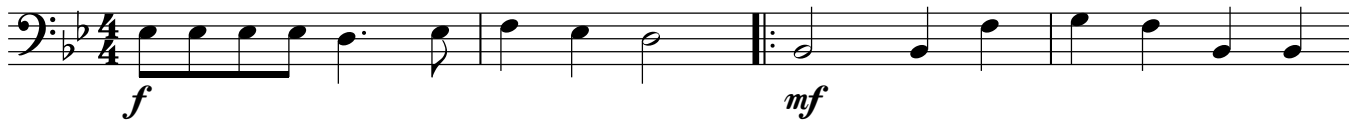
Básúna
Barítón

9. Skreytum hús með greinum grænum

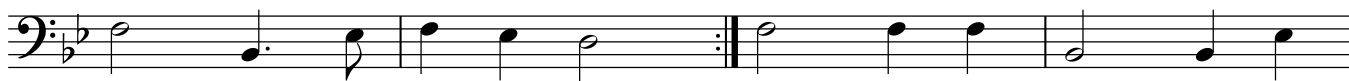
Lag frá Wales
úts. Össur Geirsson

Allegro

3



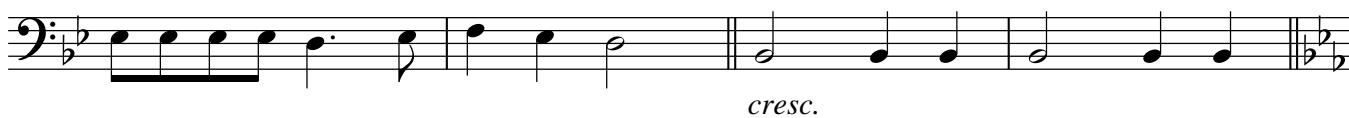
7



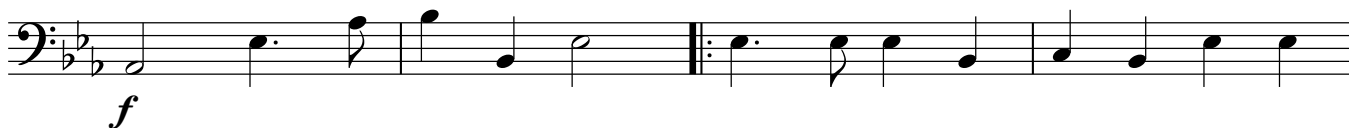
11



15



19



23



27



31

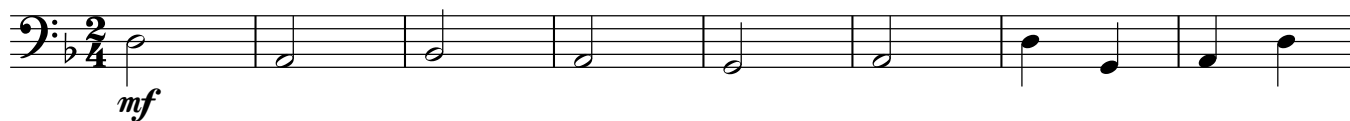


Básúna
Barítón

10. Jólasveinar ganga um gólf

Friðrik Bjarnason
úts. Össur Geirsson

Dulúðlega



9



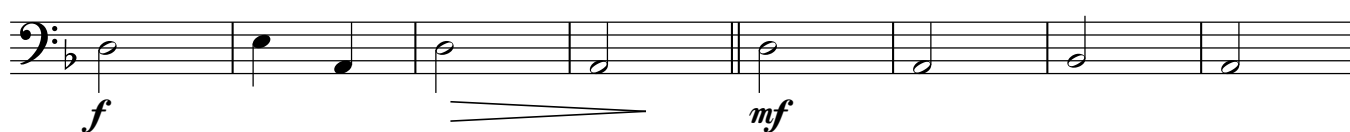
16



24



31



35

43



50

