

Jingle Bells

the sleigh leaving platform.....

Allegretto $\text{♩} = \text{c.}126$.

arranged Gordon Saville.

Crash Cymbal

12

17 *ff*

Jingle Bells

22 *f*

27

32

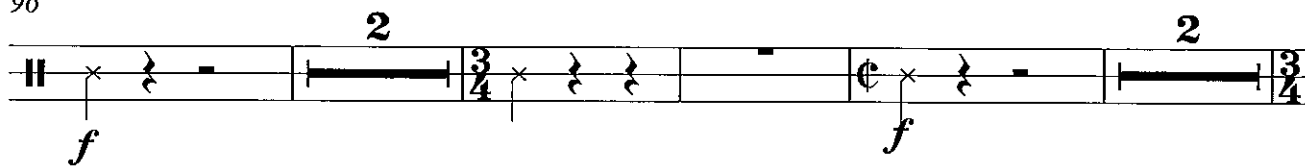
37 7 16

64 5 9

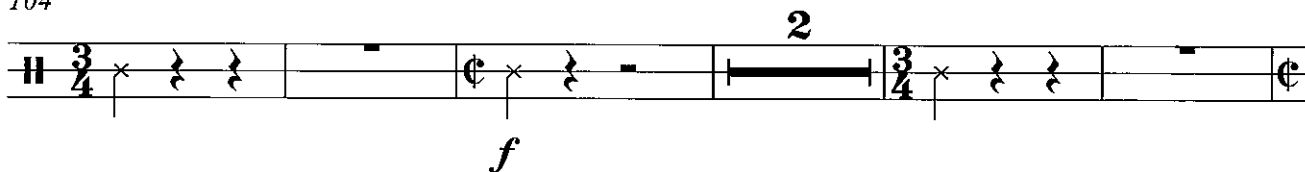
82 Whistle 3 Whistle *ff*

91

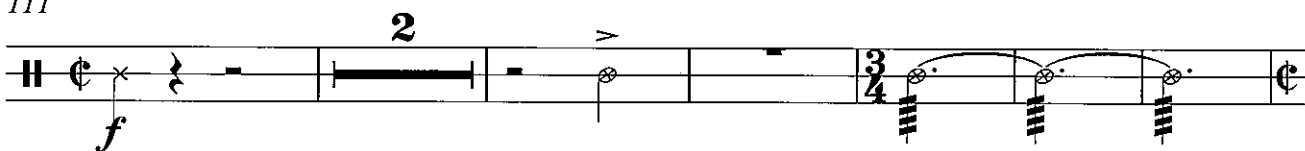
96



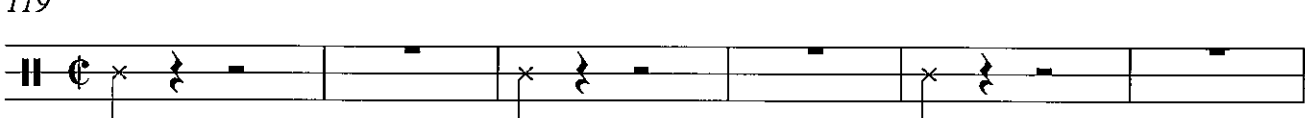
104



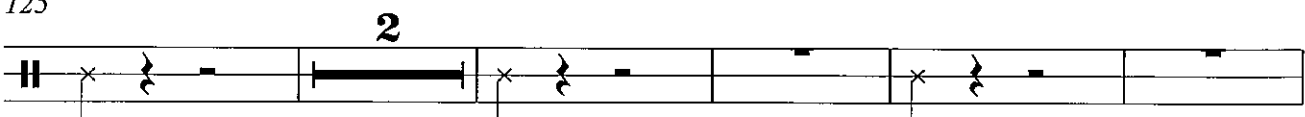
111



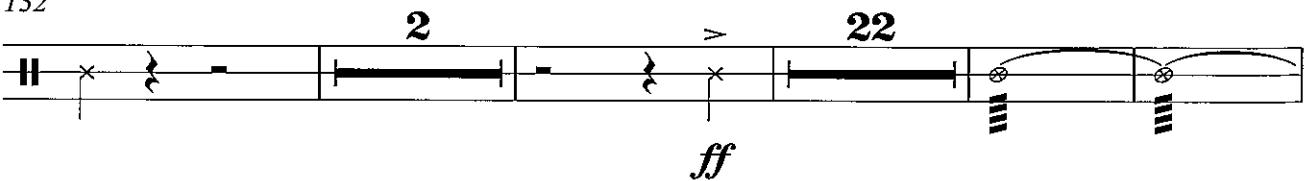
119



125



132



160

